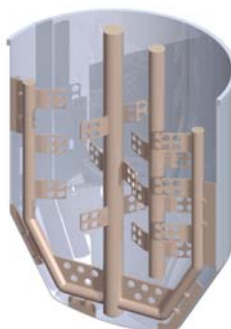


## Summary: Agitators for Standard Tanks

### *I Anchors*



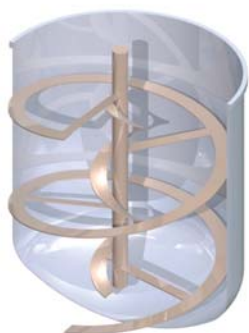
Option 01:  
U-shaped anchor



Option 02:  
Anchor with radial flow deflector



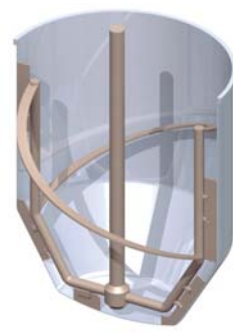
Option 03:  
U-shaped anchor with blade



Option 04:  
Helical ribbon-type anchor

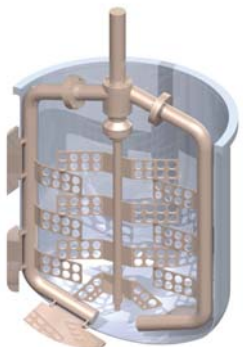


Option 05:  
Loop-type anchor



Option 06:  
Helical loop-type anchor

### *I Combined agitation*



Anchor with counter-rotating blades  
on the central shaft



Loop-type anchor  
with Cowles turbine

## Summary: Agitators for Standard Tanks

### I Propellers



Marine propeller



Gamma propeller



Lineflux propeller

### I Blades



Inclined blades (T6)



Inclined blades (T11)



High flow blades



Blades on the central shaft

### I Turbines



Cowles disk



Radial turbine

All the agitators can be mounted in tanks with rounded or conical bottoms.